

ConStruc™ CCFG-35

Dual Mode Operation Foam Generator

ConStruc™ INDUSTRIES has released their CCFG-35 Foam Generator with DUAL MODE OPERATION: Continuous Production or User Input Batch Quantities. The unit is designed to fit on both traditional drum trucks and volumetric trucks. CCFG-35 utilizes both trucks existing air, water, and electrical supply.

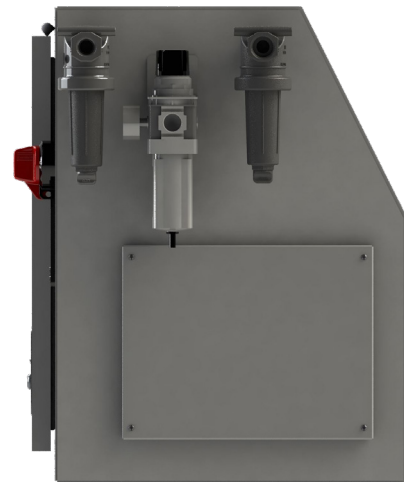
Continuous Production

Unit is mounted on a traditional volumetric concrete mixer truck and connected to the existing air, water, and electrical supplies. Via CCFG-35's digital display, user inputs a foam production rate (CFM) based on auger mixing speed and desired cellular concrete density. Slurry begins mixing and user selects the START button on the CCFG-35 to begin production.



Batch Production

Unit is mounted on a traditional ready mix drum truck and connected to the existing air, water, and electrical supplies. Batch plant batches the required amount of cement slurry in the drum truck. Foam quantity is calculated from the cellular concrete mix design and desired density. User enters the total cubic feet of foam required into the CCFG-35's digital display and presses START. The CCFG-35 produces the desired quantity of foam and stops automatically when quantity is reached.



FEATURES

Air Dryer/Filter and Water Filter Included
Water-Resistant Enclosure

REQUIREMENTS

Air Supply: up to 35 CFM

Water Supply: 10 GPM

Power Options: 12v DC or 10 A @ 240v AC

Chemical Concentrate Tank: User Provided
or Sold Separately

TECHNICAL SPECIFICATIONS

Foam Output

Up to 35 CFM to Produce up to 100 CY/Hr. of
30 PCF Cellular Concrete

Display

IP-66 Rated with Anti-Glare Coating for
Sunlight Viewability

Dimensions

42"(L) x 18"(W) x 26"(H)



Aerix Industries®
Engineering Solutions for Project Savings

